

*Welcome to..*



*Stalking the Divine Sophia*  
*Understanding the true Nature of the Divine Feminine*

**MODULE 15**



# SOPHIA

---

Beginning to help others

# Calling In Sacred Space

---





# Connect to the Earth

---

Open to Receive

# Check-in ~

*Have you felt the Divine  
Feminine Moving in you?*



# *Sophia is the mystical magical glue that holds everything together.*

---

As such she also manifests as energy flows throughout every living thing. Her essence is so magical because it is the untouchable, the unknowable, the mysterious glue that forms it all through frequency alone.

There is a natural progression, a natural flow to life on this planet. *We are inextirpably bonded to this world and exchange energy with all of it.* Every living being has its own signature of this exchange. Every living structure in your body also has its own signature.

Sometimes, especially now, our flow can be disrupted. But simply reminding those structures of their natural flow can jump start the car and move them back into place.

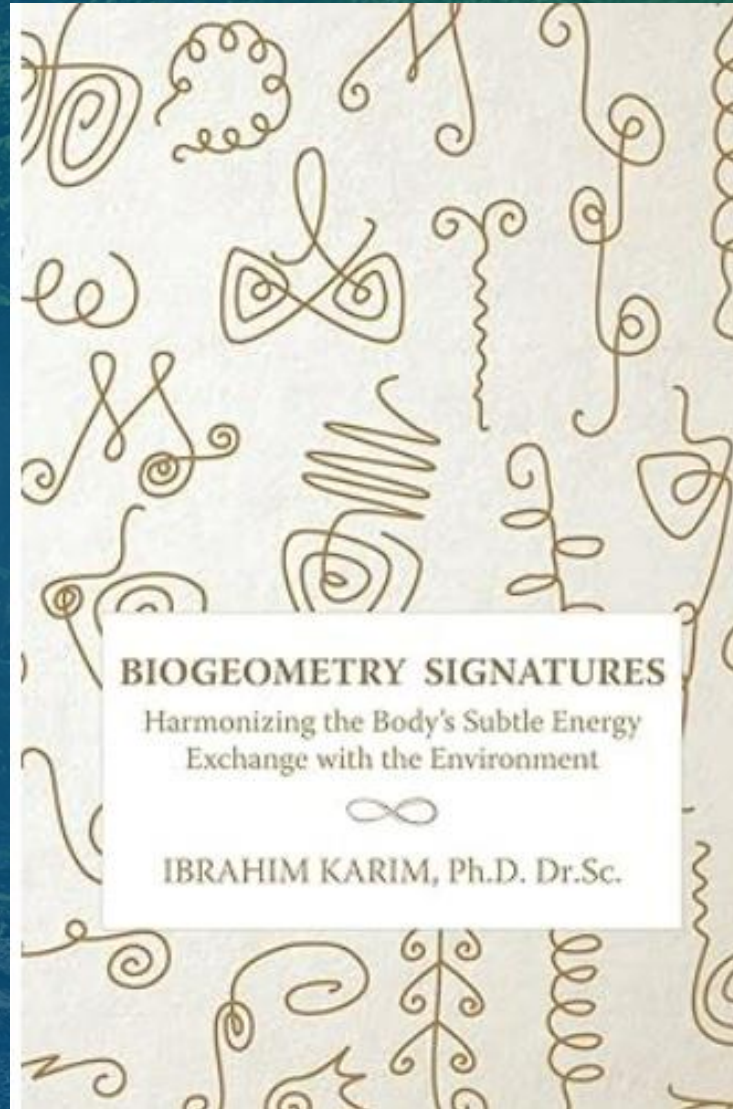


# Using Bio-Signatures On our bodies

Last week we learned how to use Bio-Signatures to help us with problems in our body.

Today, we are going to learn how to do it for another person.

This can be a great complement to any healing or counseling modality. Many of the student teachers used this technique in their private practices.



*Exciting News!*  
A Bio-Signature  
App is coming.  
Should be out  
next month!

# Making a Witness For another person

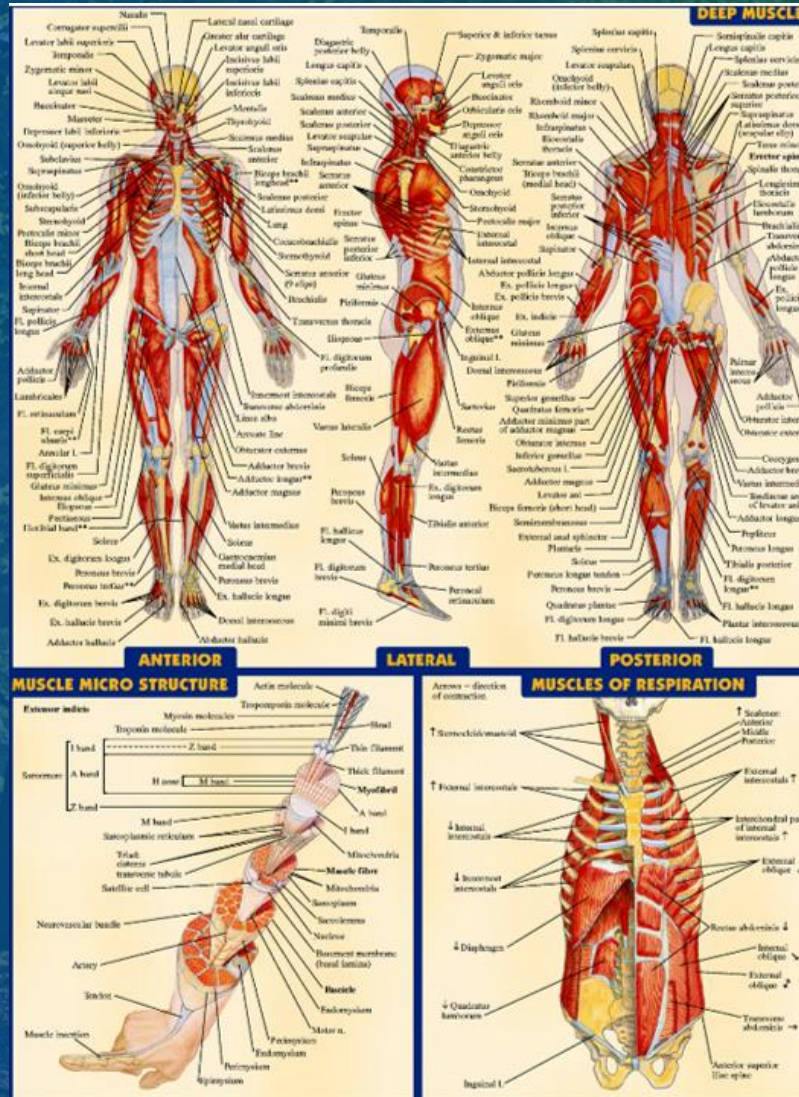
First and foremost, you always need to ask permission. Doing this without someone's permission is a violation of their free will and could constitute "black magic." Don't do it. (Mothers can sometimes get a little Grace, but not too much with adult children.)

If you have their permission and they are in close proximity to you, you can do what we did for you. Have them rub a small piece of paper on their face, or lick it, giving it some of their DNA. Then have them sign it. It is now a representation of them.

If they are far away, Use a picture of them ONLY. You can copy it or print it. Just don't use one on an electronic device. You won't be able to pick up their wavelength.



# Anatomy Charts



# Testing Another

- First get a baseline with your Neutral Pendulum on their witness. This may take some practice. Go back to the very beginning. Start at the ball and let the string out slowly.
- Then you will hold your pendulum in your dominant hand and slowly move the pointer over the anatomy chart while focusing your attention on the witness.
- Remember you are looking for fluxuations in the spin. Notice any places that it begins to slow down. Those are places that need adjustments in their energy flow.
- Once you have isolated a spot in need of treatment, look through the energy signatures you have, to see if there is one that might work for that spot.
- Begin testing each of them by tracing them with your eyes while holding the pendulum over the witness and the stick over the place on the anatomy chart, to see if you can get the pendulum to increase in speed. Test several and see which one gives you the fastest spin.

# Applying the Signature to the Witness

You can do this several different ways.

The easiest is to just place the witness on top of a pic of the bio signature.

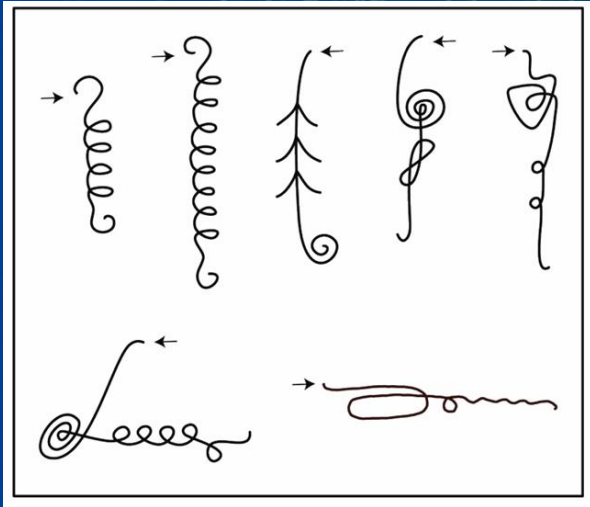
You can also draw the biosignature on a piece of paper or medical tape and tape it to the witness. This is good especially if you are doing this for several people. You can keep your diagrams free to use on others.

You can also draw it on medical tape and give it to the person to wear.

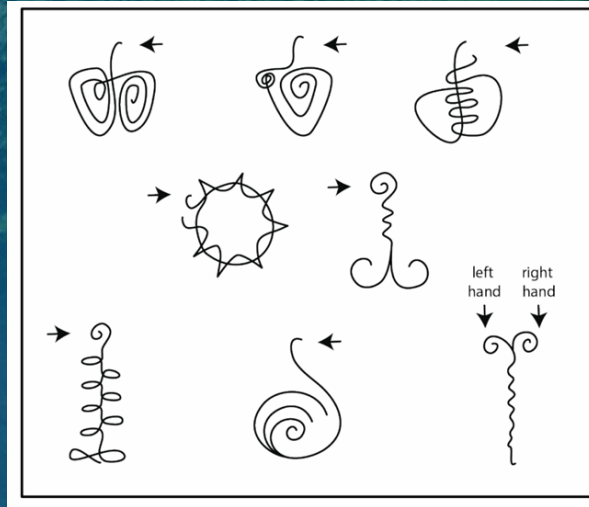
Leave it in place for a few hours or a day and then test the area again. It should hold a good vibration without the Bio-Signature. If it does, then put your witness in “witness protection” and file it away for another time.

If it doesn't hold, then try another biosignature to see if that helps. Or if it is an area of concern, tell them to seek medical attention.

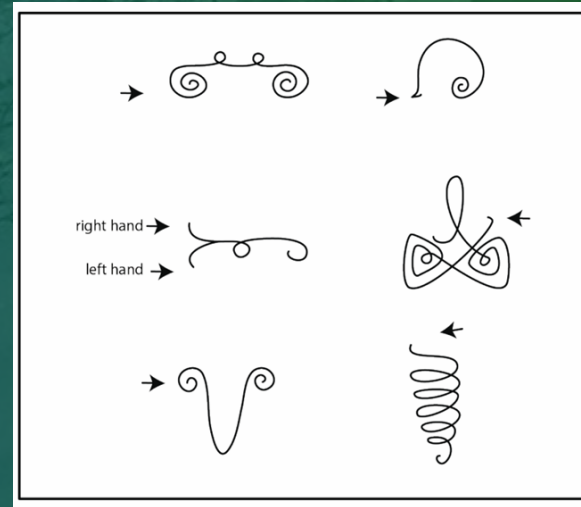
# Spine



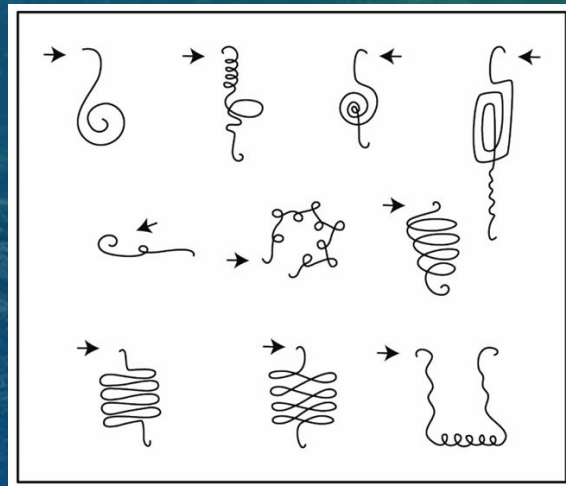
# Heart



# Endocrine



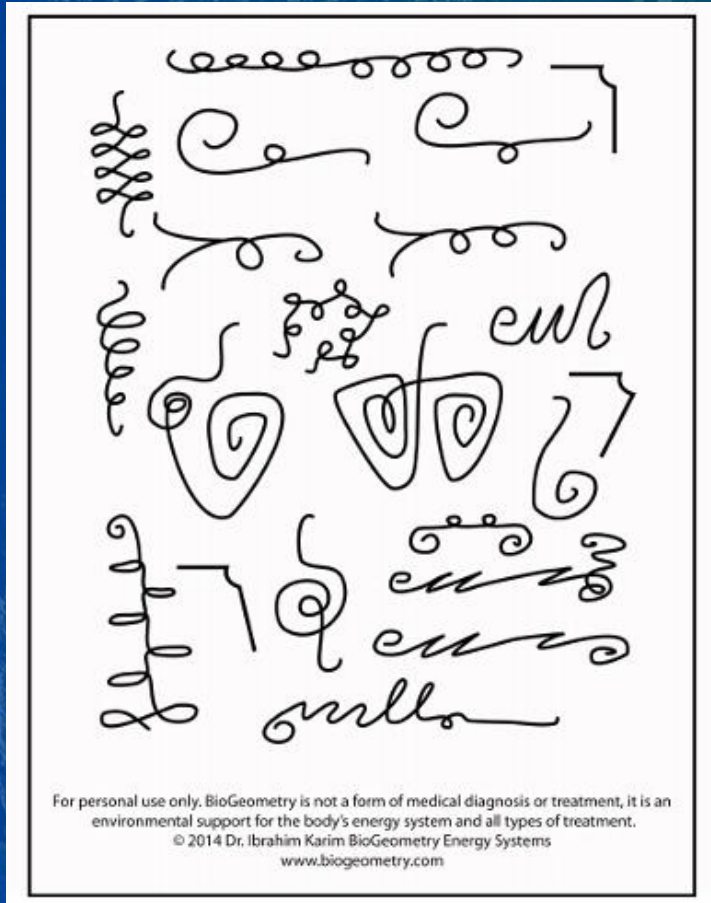
# Digestive



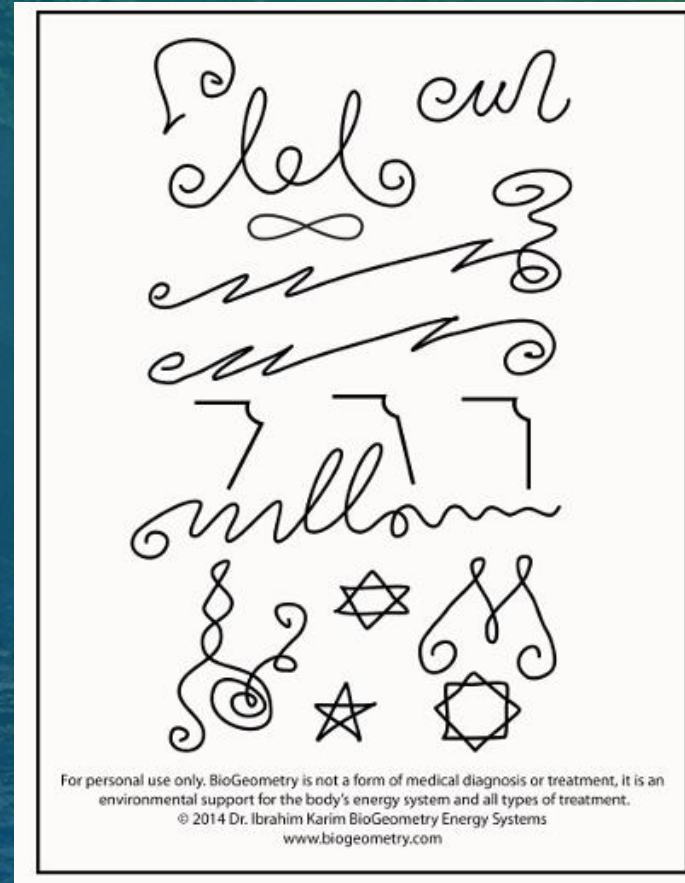
# Alternative Method

Place the Clearing Card or Emergency Card over your witness for a few minutes. Check the witness with the pendulum to see if you restored the spin.

The Emergency Card



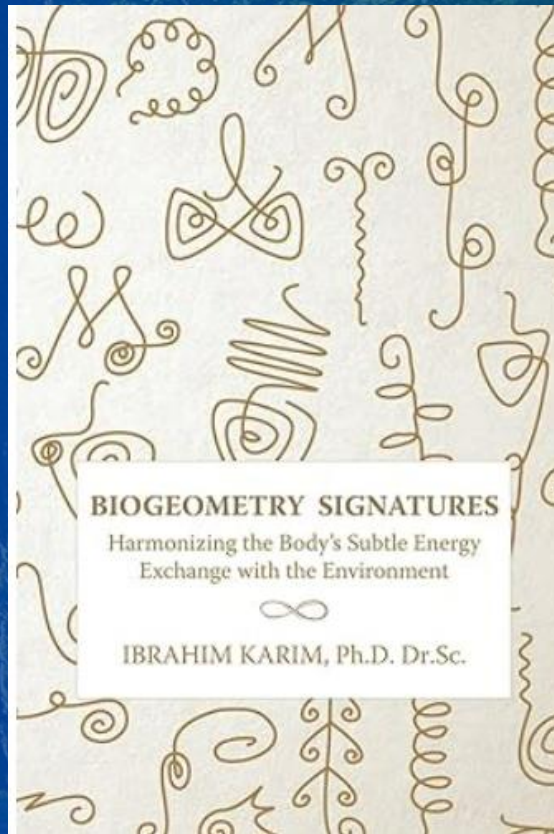
The Clearing Card



Ideally, if you want to continue, you will need to purchase:

The book...

Anatomy QuickStudy Laminated Reference Guide (QuickStudy Academic) Pamphlet – Illustrated (\$6.26 on Amazon)



Other Optional Items:

- Wooden Cooking Skewers
- Graph paper
- A recipe box to store witnesses in.
- A light board to trace biosignatures

# Going forward...

---

- Once again, this is something that is going to take a lot of practice, so
- Practice, practice, practice
- Keep doing your body scans once a week
- Make any adjustments necessary
- Practice drawing the symbols
- Make several copies of the Emergency Card and the Clearing Card and laminate them
- Use them to clear yourself, rooms and objects.



Remember, the more we practice doing this, the more we increase our own vibration with the Sophia Frequency!

By doing this gradually, and allowing acclimation time, you can avoid transformational upheaval.





# PRACITCAL PLAYTIME - The BG16 Pendulum!

---

How has your practice been going?

Questions?



Ibrahim Karim Universal  
BG16 Pendulum

# Continuing Homework:

Keep Practicing with both!

- Keep checking your personal wavelength and checking in with things that benefit you.
- Look for GOLD!
- Try out your carpet patterns
- Start using the BioSignatures
- PRACTICE, PRACTICE, PRACTICE!



# Dance and Integrate

---



# CLOSE SACRED SPACE

---

NEXT CLASS: October 4, 2024